



The NEXT STEP® in Dispersion Analysis



Adhesion Analyser

LUMiFrac®

The New Standard in Adhesion and Cohesion Testing.



Adhesive & bonding strengths | Coating & surface properties

Measurement Principle

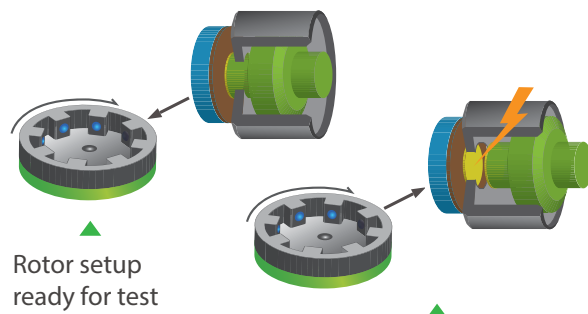
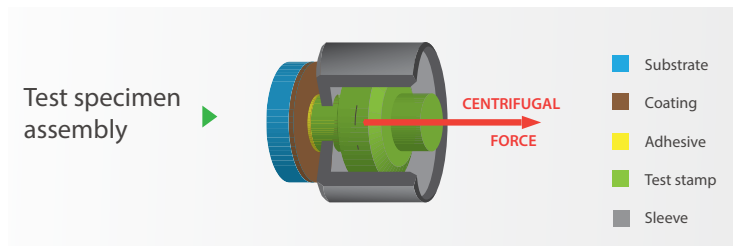
Measure 8 samples simultaneously.

▶ The centrifugal force is applied to the sample assemblies due to rotation.

▶ Detachment of the test stamp (moment of rupture) is automatically detected.

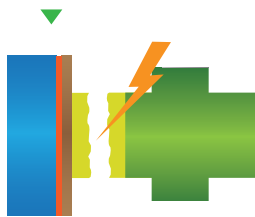
▶ A position-coded IR-signal and the current rotor speed are transmitted.

▶ The breaking load and tensile strength are calculated by SEPView®.



Test specimen when rupture occurs (position-coded data is transmitted)

Failure pattern



adhesive failure



interlayer delamination



multilayer delamination



cohesive failure

Use & benefits

- Easy preparation of your test specimen
- Up to 8 samples are analysed under identical conditions
- No sample clamping at all - simply insert and start
- Variable testing speeds
- Flexible load cycling
- Wide range of test forces (0.1 N up to 6.5 kN)
- Testing under various temperatures
- Cost-saving multi-use of test stamps
- Meets ISO 4624 and DIN EN 15870

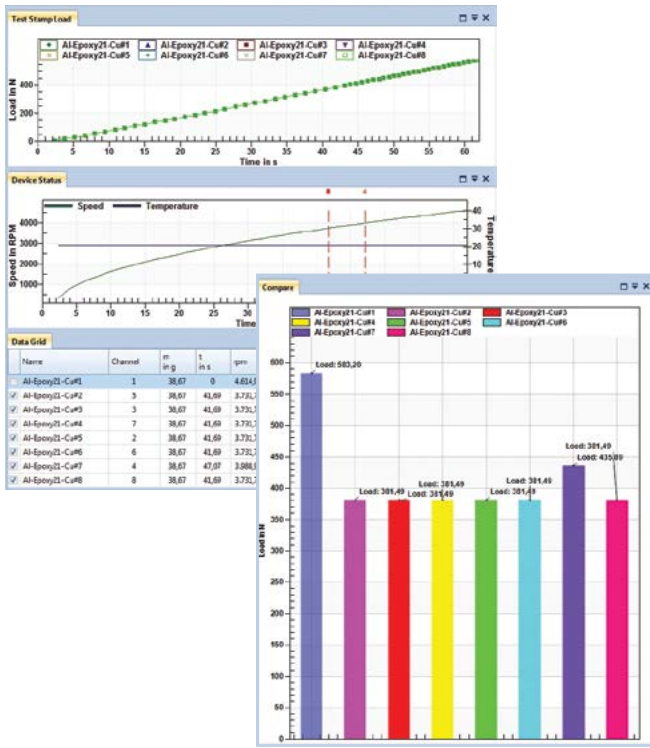
no
clamping
needed

runs on

SEPView®



your window to dispersion analysis



- ▶ Windows 7 based with Ribbon User Interface.
- ▶ Plug & play, pack & go.
- ▶ Simultaneous analysis for up to 24 samples in real-time.
- ▶ Full SOP concept.
(Creation, capture, data analysis)
- ▶ Allows to save fracture pattern.
- ▶ Windows Explorer based data management.
- ▶ Comprehensive database security and full audit-log.
- ▶ Individual user customization.
- ▶ Complies with 21 CFR Part 11.

Applications

Standardised short time measurements for QC.

Testing of tensile strength of bonded joints:

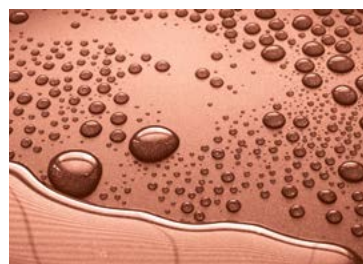
- Cyanoacrylates
- Epoxy adhesives
- Polyurethanes
- ...

Determination of adhesive strength of coatings:

- Anti-corrosion coatings
- Decorative coatings
- Metallized polymers
- Optical coatings
- ...

Long-term fatigue testing:

- Alternating loads
- Different temperatures



Specifications

Load range	0.1 N–6.5 kN
Tensile strength	up to 80 MPa
Measurement time	1 min up to 99 h, depending on task and objective
Conformity	ISO 4624; DIN EN 15870

Samples	up to 8 simultaneously
Sample dimension	max. 30 mm x 30 mm x >1 mm
Adherent area	diameter 7 mm, 10 mm and customized
Test stamp material	metal or non-metal
Test stamp weight	4.1 g - 38.7 g (W/Cu up to ca. 58 g)

Dimensions (W x H x D)	38 x 64 x 29.6 cm
Weight	56 kg, desktop
Rotor speed	100–13,000 rpm
Temperature control	–11°C to +40 °C
Data interface	USB
Power supply	100 V, 120 V, 230 V; 50/60 Hz
Power consumption	max. 1050 W



LUM GmbH, Berlin, Germany

Phone: +49 30 6780 60 30

E-Mail: info@lum-gmbh.de

Web: www.lum-gmbh.com

www.dispersion-letters.com

Distributed by:



The NEXT STEP® in Dispersion Analysis